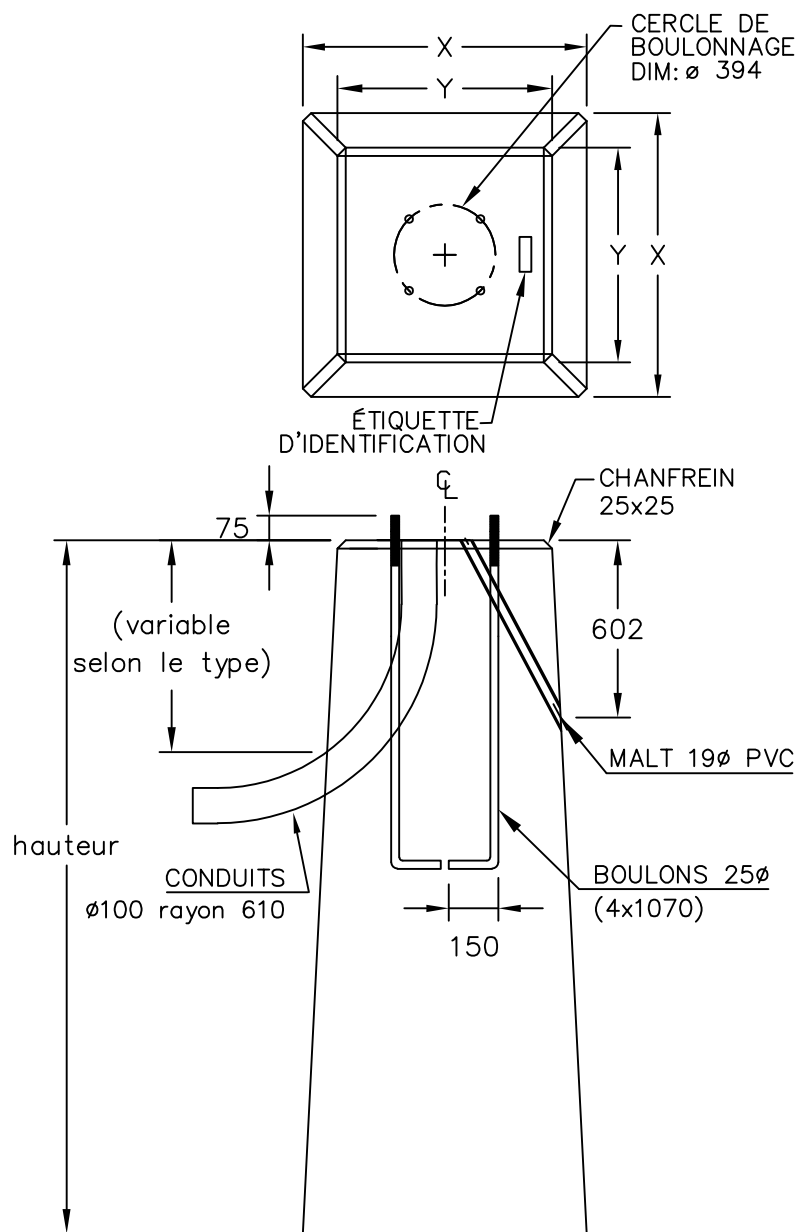


## BASES DE LAMPADAIRE POUR VILLE DE MONTRÉAL ET CSEM

**Base de lampadaire  
préfabriquée en béton armé  
pour conduits Ø 100 mm en C.P.V.**

**BL-8CR**  
(MONTRÉAL DNI-4A-103) TYPE



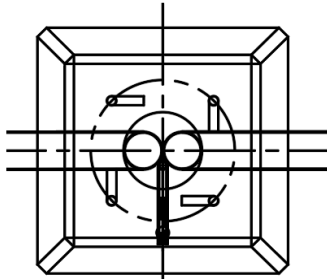
	X	Y	Hauteur (mm)	Poids (Kg)
<b>BL-8CR</b>	860	600	2100	2686

Béton : 35 MPa

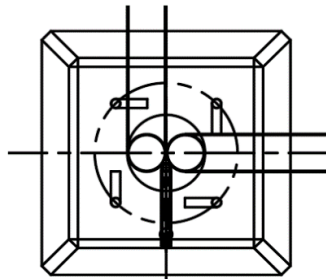
Toutes les dimensions sont exprimées en millimètres sauf indication.

Le béton et les aciers d'armature sont conformes aux exigences de la Ville de Montréal #DNI-4A-103

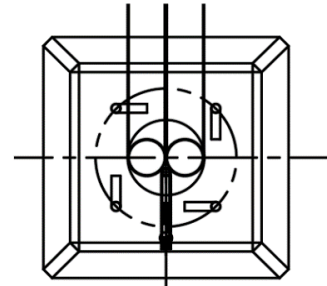
## TYPES NORMALISÉS DE BASES DE LAMPADAIRE



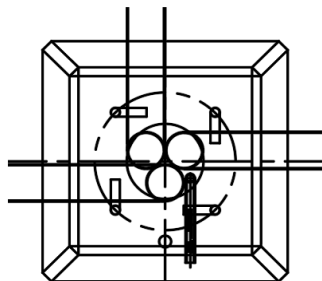
Type 1



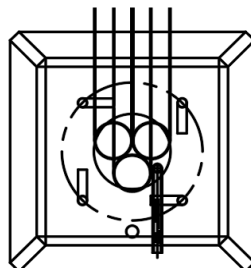
Type 2



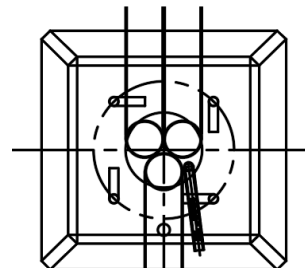
Type 3



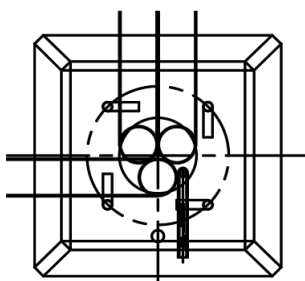
Type 4



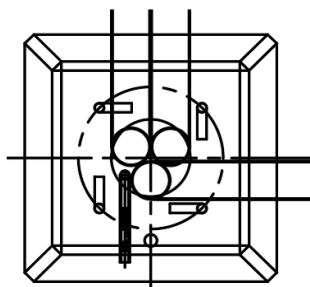
Type 5



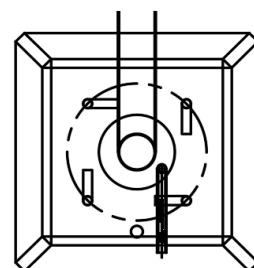
Type 6



Type 7



Type 8



Type 9